

# WIRELESS GO II™

DUAL CHANNEL WIRELESS MICROPHONE SYSTEM



3.5mm, USB-C, iOS®  
AUDIO OUTPUT\*



BUILT-IN  
MICROPHONE



DIGITAL  
TRANSMISSION

The next generation of wireless audio from RØDE is here. Wireless GO II is an extremely versatile and ultra-compact dual channel wireless microphone system consisting of a single receiver and two transmitters. Featuring a high-quality microphone built into each transmitter for completely wireless operation, flexible outputs for connecting to cameras, computers and smartphones, extended transmission range and much more, Wireless GO II is the perfect microphone for a wide range of content creation applications.

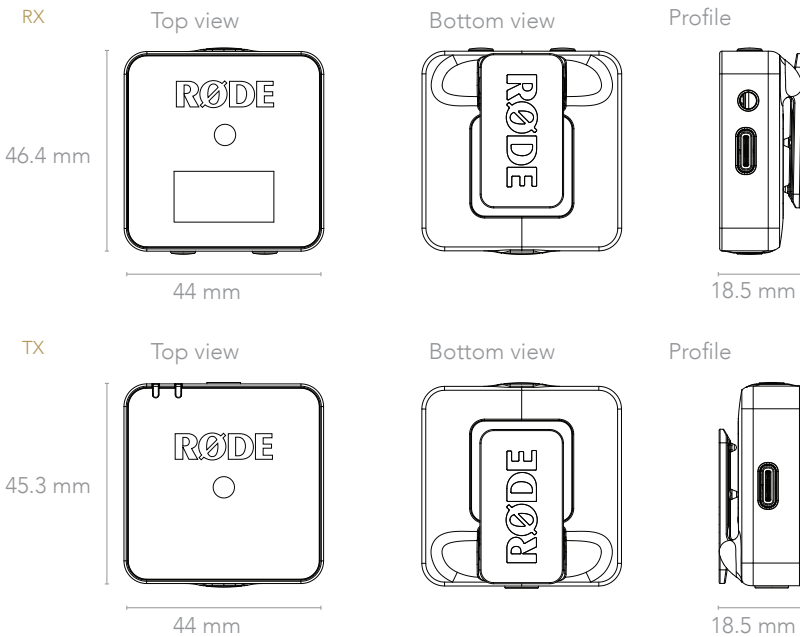


- Dual channel wireless microphone system
- Series IV 2.4GHz digital transmission, 128-bit encryption
- 3.5mm TRS analog output, USB-C and iOS compatible digital audio output
- In-built rechargeable lithium-ion battery – up to 7 hours battery life
- Ability to switch between mono or stereo output
- 200m transmission range (line of sight)



## ACOUSTIC & ELECTRICAL SPECIFICATIONS

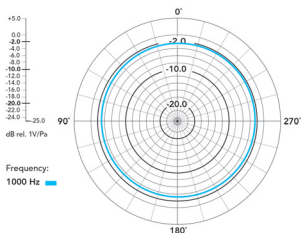
Acoustic Principle:	Pre-polarised pressure transducer
Polar Pattern:	Omnidirectional
Frequency Range:	50Hz – 20kHz
Maximum SPL (Mic):	100 dB SPL (1kHz @ 1m) dBu
Maximum Input Level (3.5mm):	-20dBV
Microphone Preamp Gain:	20dB
Equivalent Noise Level (A-Weighted):	22dBA
Power Requirements:	In-built rechargeable lithium-ion battery charged via USB 5V, 0.3A
Operating Time:	Up to 7 hours
Analog Inputs:	3.5mm TRS (lavalier microphone input)
Analog Outputs:	3.5mm TRS
Transmission Range:	200m (line of sight)
Computer Connectivity:	USB Type-C
Operating System Requirements:	macOS 10.11 above Windows 10 and above



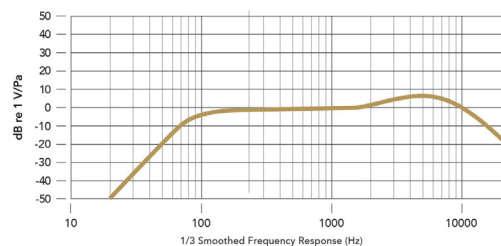
## MECHANICAL SPECIFICATIONS

Weight (grams):	TX: 30g RX: 32g
Dimensions (millimetres):	TX: Length: 44, Width: 45.3, Height: 18.3 RX: Length: 44, Width: 45.5, Height: 18.3
Included Accessories:	3 x SC20 1 x SC5 3 x Furry 1 x Pouch Bag

## POLAR PATTERN



## FREQUENCY RESPONSE



PATENT PENDING

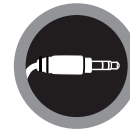


# LAVALIER GO™

PROFESSIONAL WEARABLE MICROPHONE



**BROADCAST  
QUALITY**



**TRS  
CONNECTION**

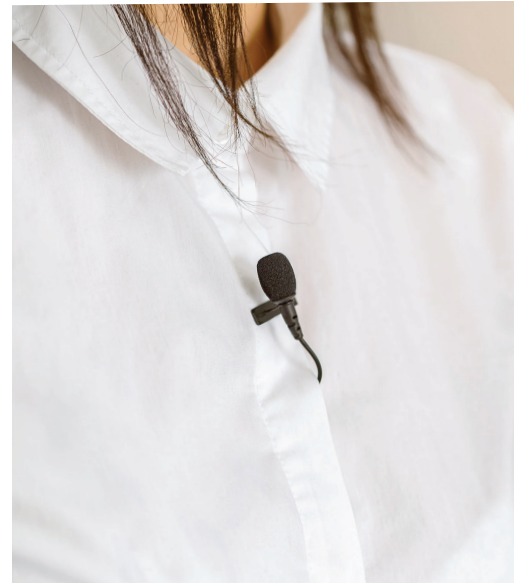


**WIRELESS GO  
COMPATIBLE**



Lavalier GO is a professional-grade wearable microphone designed for use in a wide range of applications. The 3.5mm TRS connector is designed to pair perfectly with the RØDE Wireless GO™ and most recording devices with a 3.5mm TRS microphone input.

- Professional-grade lavalier mic with 3.5mm TRS jack
- High-quality omnidirectional condenser capsule
- Discreet 4.5mm miniature microphone
- Kevlar® reinforced cable
- Includes pop shield and durable mounting clip



## ACOUSTICS & ELECTRICAL SPECIFICATIONS

Acoustic Principle:	Permanently Polarised Condenser
Polar Pattern	Omni-directional
Frequency Range	20Hz - 20kHz
Output Impedance	3k $\Omega$ Typical
Signal To Noise Ratio	67 dB
Equivalent Noise	27 dB Typical
Maximum SPL	110 dB
Sensitivity	-35dB (17.8mV @94dB SPL)
Dynamic Range	83dB Typical
Power Requirements	Powered from plug-in power TRS socket (2.7V)
Output Connection	Gold-plated TRS plug

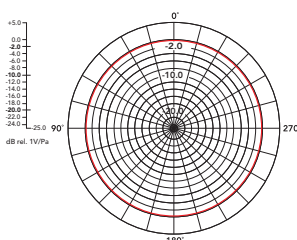
MIC



TRS



## POLAR PATTERN

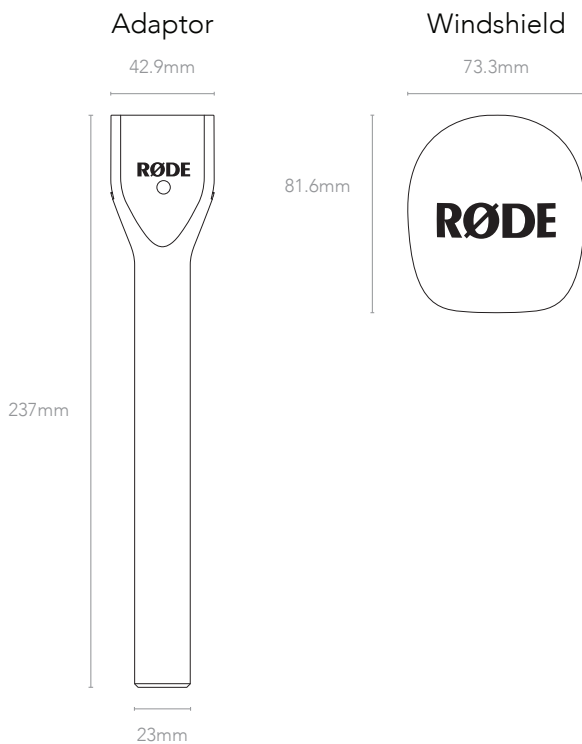


# INTERVIEW GO™

HANDHELD ADAPTOR FOR WIRELESS GO



The Interview GO is an adaptor that converts the Wireless GO transmitter into a compact handheld interview microphone. Includes a foam windshield to reduce wind noise and plosives.



## SPECIFICATIONS

Dimensions (mm): Adaptor	Diameter: 23 Width: 42.9 Height: 237
Windshield	Depth: 73.3 Width: 73.3 Height: 81.6
Weight (grams): Adaptor Windshield	84 8
Compatible Microphones:	Wireless GO